

Dexus Real Estate Partnership

The opportunity fund series

Fund overview

Capitalising on market disruption and dislocation

The DREP strategy targets unlisted Australian real estate opportunities, with the first fund (DREP1) successfully launched in 2021 and the second planned fund (DREP2) in the series set to launch post further deployment of DREP1.

Like DREP1, the upcoming second fund will aim to deliver enhanced returns by investing throughout the capital structure in situations ranging from distress to growth, with each fund positioned and competing for investment opportunities as a provider of both capital and capability.

The DREP strategy is to identify and manage investment opportunities across all Australian property sectors, leveraging the strength of Dexus's real estate platform.

Key facts

Leveraging market opportunity

Aiming to deliver enhanced returns

15%

Target return p.a. (net equity IRR)

Proven track record

Managed by one of Australia's leading real asset managers

Breadth of investment opportunities

Macro thematic including higher interest rates and capital scarcity, continued population growth and residential undersupply, are creating attractive equity and credit opportunities with the potential to deliver enhanced returns.

Development



Develop-to-sell trading approach targeting growth sectors

Investments may be realised prior to or during construction or may be held through construction until stabilised

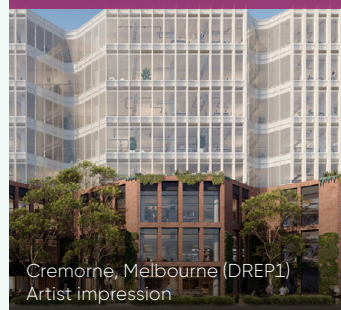
Repositioning



Creating value through re-zoning or conversion to a higher value use, refurbishment and re-leasing

Targeting opportunities which demand Dexus's deep real asset capability

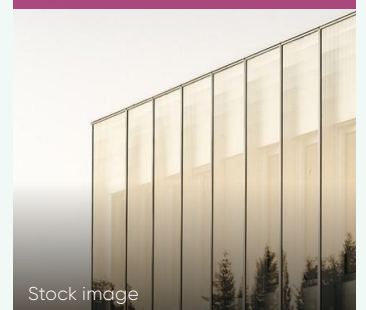
Alternative credit



Targeting lending where the traditional sources of capital are unable or unwilling to fund

New loans, refinance or purchase of performing loans underpinned by property

Special situations



Acquisition of assets through administration, receivership or forced sale

Purchase of non-performing loans underpinned by property

Track record

Dexus has a depth of enhanced return experience through a combination of reposition to sell, develop to sell and higher value use strategies. DREP offers **direct access** to Dexus's enhanced returns capabilities not otherwise available to its unlisted investors.

Dexus combines platform strength and scale with an entrepreneurial approach to originating unique and timely opportunities to create value.

As a specialist manager of Australian real estate, Dexus is highly attuned to the dynamics of the market with a vertically integrated platform and in-house core skillsets across leasing, development, transactions and management – all key contributors to the success of the trading business.

Our trading track record since FY12

30%

Average unlevered property IRR¹

\$546m

Trading profits realised pre-tax

23

Trading properties sold and settled

DREP series spotlight – DREP1

- DREP1 was the first fund, launched in 2021 and raised **\$475m of equity commitments**, above the targeted capital commitment of \$300m
- **Strong pipeline** supported by extensive access to information, acquisition, and leasing deal flow to identify unique investment opportunities
- Eight investments contracted with **diversification** across investment strategies and real estate sub-sectors

Strategy in action

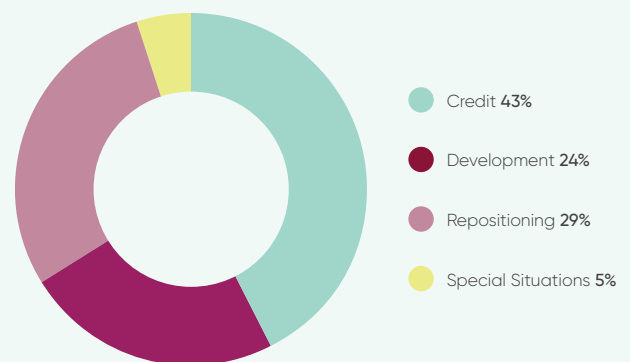
Sector: Residential apartments

Strategy: Special situations

Opportunity:

- Off-the-plan buyers of residential apartments defaulted, failing to settle the purchase when construction completed
- DREP1 has negotiated the conditional purchase² of a portfolio of these completed apartments, at a material discount to current market values
- This opportunity is reinforced by strong macro tailwinds, supporting projected demand along with constrained supply of residential apartments due to below trend construction starts in recent years
- Subject to purchase completing, the strategy will be to initially lease the apartments into a market with low vacancy before a periodic sell down

Fund investments by investment strategy



Sector: Healthcare

Strategy: Repositioning

Opportunity:

- Leveraged existing relationships for exclusive, off-market 100% acquisition of a medical centre located 650m from a major local hospital
- The medical centre has been undermanaged with a large portion of the site undeveloped
- A number of repositioning initiatives leveraging Dexus's broad property capability are underway, including further development and increased leasing to reposition as an institutional grade healthcare asset for future sale

1. IRR represents an average of asset-level pre-tax returns from project commencement until settlement on realisation, covering the period between FY12 and FY23

2. Subject to FIRB approval

Dexus: one of Australia's leading real asset managers

Scale, resilience, outperformance

The Dexus difference

At Dexus, we invest capital alongside our partners, aligning interests and drawing strength from our operational expertise. For example, Dexus provided a \$100 million capital commitment for DREP1.

Our strong track record of delivering consistent investor returns has built our history of outperformance against sector and index benchmarks.

Our scale enables diverse product investment opportunities, and capacity to invest in people, systems and technologies that elevate the customer experience and deliver enhanced returns.

Why invest with Dexus?

Experience translates to performance

As a long-term owner and manager of real estate and infrastructure, with a performance-driven team of property and infrastructure specialists, we boast an extensive knowledge base and network in Australia, enabling us to unearth unique investment opportunities.

Why invest in Australia?

Deliberate focus creates unique advantage

Australia is one of the strongest performing economies in the world for investors, and at Dexus, we have honed our strategic approach to harness this investment potential.

Long term underlying fundamentals support continued growth

- Leading OECD population growth rates
- Highly skilled workforce
- GDP growth set to outperform G7 countries 2022 to 2032
- One of the world's largest superannuation markets
- Highly liquid real assets secondary market
- Low risk regulatory environment
- Low sovereign risk and strong legal framework

Dexus real assets platform

35+ years

of funds management
experience

\$61.0b¹

portfolio

\$43.6b¹

combined third
party FUM

\$17.4b¹

development pipeline

For more information, please contact one of our team members or visit dex.us.com/DREP.

Jason Howes

Fund Manager, DREP

Brad McCann

Assistant Fund Manager, DREP

Natalie Tan

Head of Institutional Capital

+61 (0) 413 486 084

natalie.tan@dexus.com

John Taylor

Head of Private Capital

+61 (0) 405 448 595

john.taylor@dexus.com

Disclaimer:

This document is issued by Dex^{us} Wholesale Management Limited (ACN 159 301 907, AFSL No. 426801) ("DWML"). DWML is a wholly owned subsidiary of Dex^{us} (ASX: DXS).

This document is not an offer of units or stapled securities for sale and is not financial product advice.

This document has been prepared for the purposes of providing preliminary information about the proposed Dex^{us} Real Estate Partnership 2 ("DREP2" or the "Fund") to selected wholesale investors, and to seek feedback and gauge potential interest in a fund of the sort described. This proposal set out in this document in relation to the Fund is incomplete and may change. The establishment of the proposed Fund is subject to DWML's and Dex^{us}'s internal processes and so may not proceed. No investment commitment or binding expression of interest can be made in connection with this document. In no circumstances may this presentation be made available to a "retail client" within the meaning of the Corporations Act 2001 (Cth).

If Dex^{us} believes there may be sufficient general interest in the potential opportunity described in this document, then it will prepare a final Private Placement Memorandum in compliance with applicable laws for any future marketing or offer of securities. Any investment commitment would be subject to a legally-binding application form or subscription agreement after completion of any marketing in the future.

This document and its contents are confidential to the person to whom it is provided and should not be copied or distributed in whole or in part or disclosed to any other person without prior written consent.

Information in this document, including, without limitation, any forward-looking statements, or opinions (the "Information") may be subject to change without notice. To the extent permitted by law, DWML and Dex^{us}, and their officers, employees and advisers do not make any representation or warranty, express or implied, as to the currency, accuracy, reliability, or completeness of the Information and disclaim all responsibility and liability for it (including, without limitation, liability for negligence). Actual results may differ materially from those predicted or implied by any forward-looking statements for a range of reasons outside the control of the relevant parties.

The information contained in this document should not be considered to be comprehensive or to comprise all the information which a potential DREP2 investor may require in order to determine whether to invest in DREP2. This document does not take into account the financial situation, investment objectives and particular needs of any particular person.

The repayment and performance of an investment in DREP2 if the Fund is established is not guaranteed by DWML or any of its related bodies corporate or any other person or organisation. Past performance is not an indication of future performance. An investment would be subject to investment risk, including possible delays in repayment and loss of income and principal invested.

All currency figures are expressed in Australian dollars (AUD), unless otherwise specified.

Due to rounding, numbers presented throughout this presentation may not add up precisely to the totals provided and percentages may not precisely reflect the absolute figures.

Returns and IRRs are shown for illustrative purposes only and because of the differences and limitations of the calculation methods, should not be compared to each other or used as an indication of how the Fund will perform.

The specific investments included in this presentation were selected on the basis of being representative of investments or commitments to invest made by Dex^{us} or Dex^{us}-managed funds in the investment sectors described. They do not represent all investments in those sectors made or sold by Dex^{us} or in relation to which Dex^{us} acted as adviser (and are likely to represent only a small percentage of such investments).